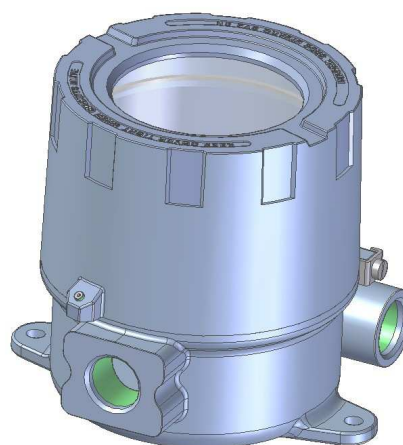
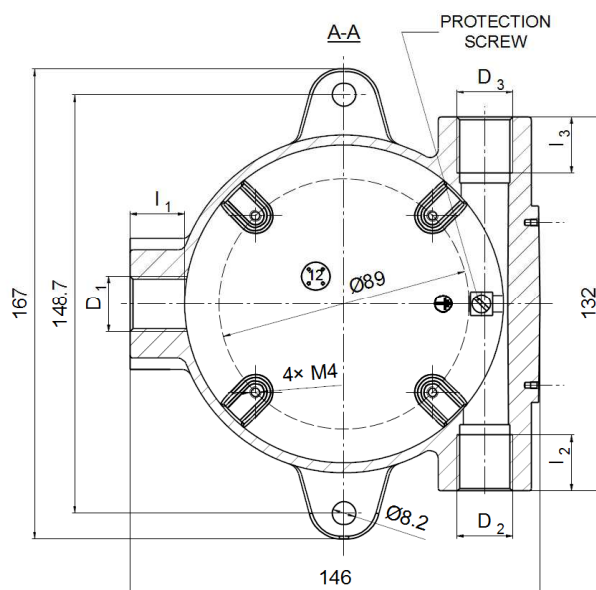
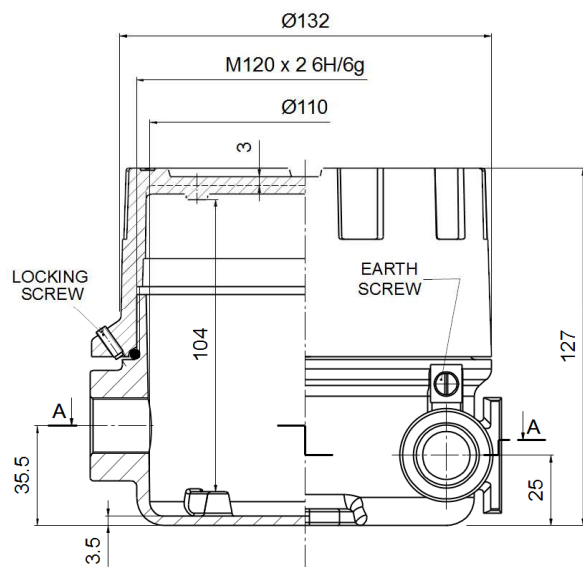


INSTRUMENT HOUSING – type XD-S120



Material of housing: stainless steel DIN 1.4401, AISI 316

Service temperature: $T_{serv} = -50 \div 150^{\circ}\text{C}$ (85°C with window) – silicone VMQ rubber

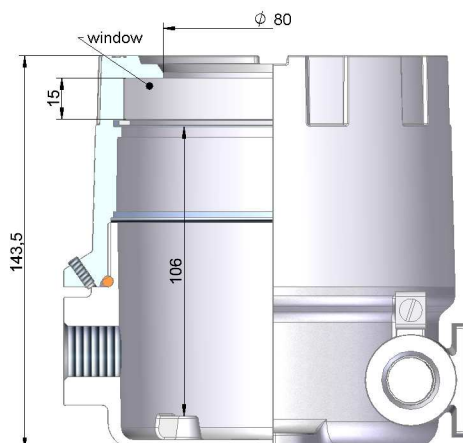
$T_{serv} = -20 \div 200^{\circ}\text{C}$ (85°C with window) – FKM rubber

THREAD D_3	l_2 [mm]	THREAD D_2	l_3 [mm]	THREAD D_1	l_1 [mm]	SEAL MATERIAL
M20x1.5 M24x1.5 M25x1.5	20	M20x1.5 M24x1.5 M25x1.5	20	M20x1.5 M24x1.5 M25x1.5 M27x2	20	4
½ NPT mod ¾ NPT mod	16,2	½ NPT mod ¾ NPT mod	16,2	½ NPT mod ¾ NPT mod 1 NPT mod	16,2 19	5
PD		PD		PD		

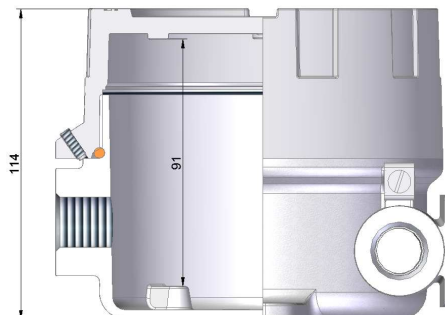
PROTECTION CONCEPT

Protection method	Type of protection		Permitted use	Certificate No.	Protection Principle
	ATEX Marking	IECEx Marking			
Flameproof EN 60079-0 EN 60079-1 EN 60079-31 IEC 60079-0 IEC 60079-0 IEC 60079-31	I M2 Ex db I Mb	Ex db I Mb	----	KDB 13 ATEX 0012U IECEx KDB 13.0006U	Contain the explosion and quench the flame
	II 2G Ex db IIC Gb	Ex db IIC Gb	Zone 1, Zone 2		
	II 2D Ex tb IIIC Db	Ex tb IIIC Db	Zone 21, Zone 22		

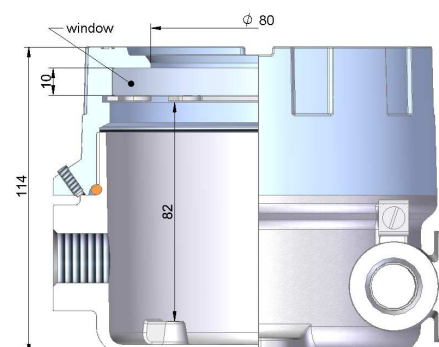
XD-S120win



XD-S120L



XD-S120Lwin



ORDERING

XD-S120 . - .

- .. / ..

- .. / ..

- .. / ..

Type of instrument housing

Version of instrument housing

- = standard
- win** = cover with window
- L** = low cover
- Lwin** = low cover with window

Material of seal

- 4 = VMQ rubber
- 5 = FKM rubber

Symbol of conduit thread $D_3 - D_2$

Standard:

- M2 = M20x1,5
- N2 = 1/2 NPTmod – modified ac. to OIT-17/03
- N3 = 3/4 NPTmod – modified ac. to OIT-17/03

On request:

- M24 = M24x1.5
- M25 = M25x1.5
- PD = plugged

Notice:Type: "size of thread / PD" if thread is plugged, e.g. **M2/PD**, etc.Symbol of process thread D_1

Standard:

- M2 = M20x1,5
- N1 = 1 NPTmod – modified ac. to OIT-17/03
- N2 = 1/2 NPTmod – modified ac. to OIT-17/03
- N3 = 3/4 NPTmod – modified ac. to OIT-17/03

On request:

- M24 = M24x1.5
- M25 = M25x1.5
- M27 = M27x2
- PD = plugged

Notice:Type: "size of thread / PD" if thread is plugged, e.g. **M2/PD**, etc.

STANDARD PRODUCT:

XD-S120-4- D_3 - D_2 - D_1

Sample: XD-S120-4-M2-M2-M25

XD-S120win-4-N3-N3/PD-N3

PROTECTION DEGREE

IP	D_3, D_2, D_1
54	threaded connection without sealing
67	threaded connection with additional sealing