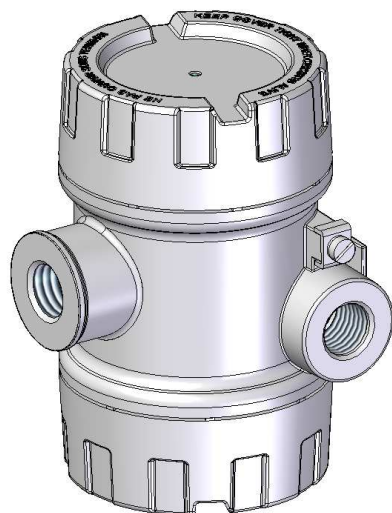
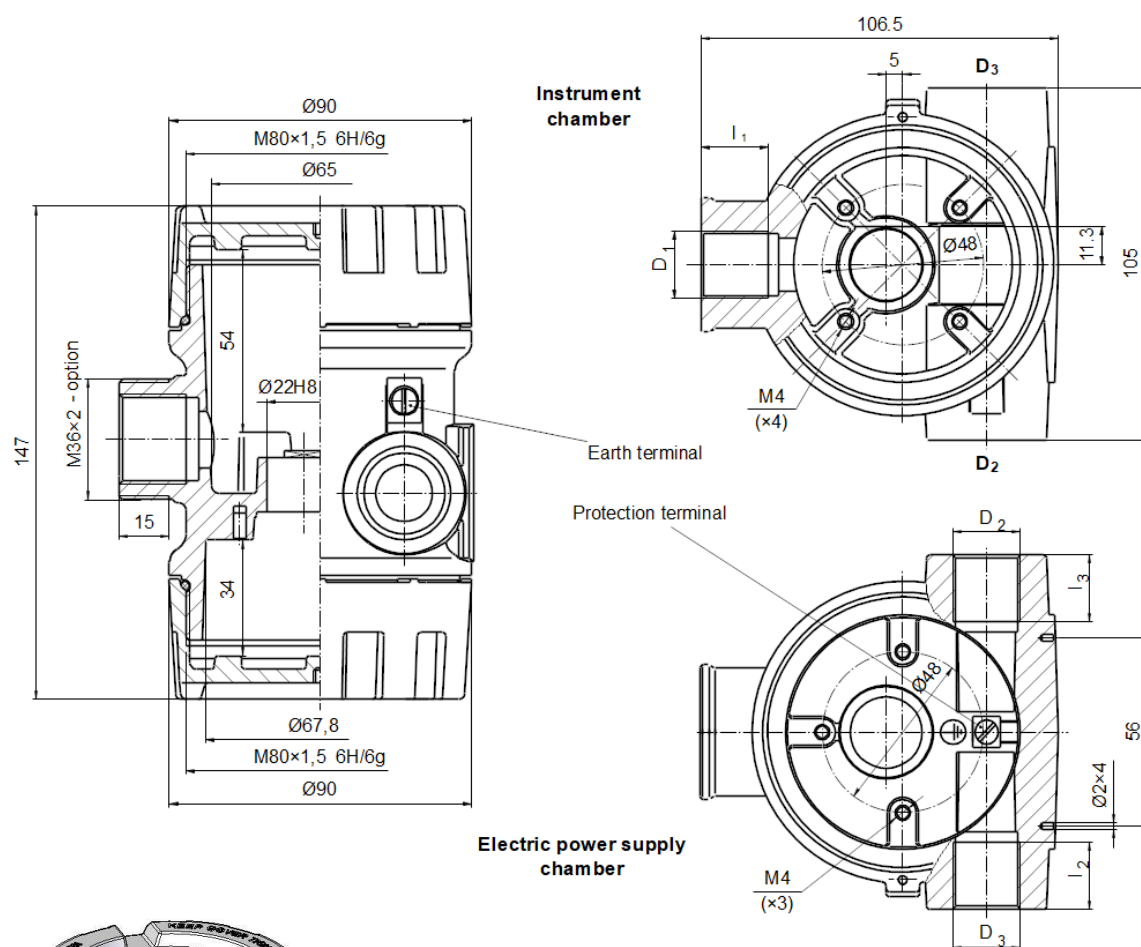
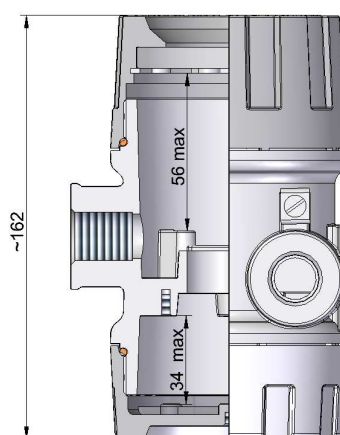


TWO-COMPARTMENTS INSTRUMENT HOUSING – type XD-ID80



XD-ID80win



Material of body and cover: aluminium pressure die-casting

Service temperature: $T_{serv} = -40 \div 100^{\circ}\text{C}$ (85°C with window) – silicone VMQ rubber

Coating: chromating and chemically resistant paint (outside only)

THREAD D_3	l_2 [mm]	THREAD D_2	l_3 [mm]	THREAD D_1	l_1 [mm]	SEAL MATERIAL	COATING
M20x1.5 M24x1.5 M25x1.5	20	M20x1.5 M24x1.5 M25x1.5	20	M20x1.5 M24x1.5 M25x1.5 M27x2	20	4	SE
$\frac{1}{2}$ NPT _{mod} $\frac{3}{4}$ NPT _{mod}	16,2	$\frac{1}{2}$ NPT _{mod} $\frac{3}{4}$ NPT _{mod}	16,2	$\frac{1}{2}$ NPT _{mod} $\frac{3}{4}$ NPT _{mod}	16,2		SPU
PD		PD		PD			Cal

PROTECTION CONCEPT

Type of protection		Permitted use	Certificate No.	Protection Principle
ATEX Marking	IECEX Marking			
1026 II 2G Ex db IIC Gb	Ex db IIC Gb	Zone 1, Zone 2 Zone 21, Zone 22	FTZU 05 ATEX 0115U IECEX FTZU 19.0001U	Contain the explosion and quench the flame
1026 II 2D Ex tb IIIC Db	Ex tb IIIC Db			

ORDERING

XD-ID80... - .
- .. / ..
- .. / ..
- .. / .. / ..
- . ..

Type of instrument housing

Version of instrument housing

= standard

win = cover with window

Material of seal

4 = VMQ rubber

Symbol of conduit thread D₃ - D₂

M2 = M20×1.5

M24 = M24×1.5

M25 = M25×1.5

N2 = ½ NPTmod – modified +1/2 to +1 thread deeper

N3 = ¾ NPTmod – modified +1/2 to +1 thread deeper

PD = plugged

Notice:

 Type: "size of thread / PD" if thread is plugged, e.g. **M2/PD**, etc.

Symbol of process thread D₁

M2 = M20×1.5

M24 = M24×1.5

M25 = M25×1.5

M27 = M27×2

N2 = ½ NPTmod – modified +1/2 to +1 thread deeper

N3 = ¾ NPTmod – modified +1/2 to +1 thread deeper

PD = plugged

Notice:

 Type: "size of thread / PD" if thread is plugged, e.g. **M2/PD**, etc.

Outside thread on D₁ connector

M36 = M36×2 – non-flameproof male thread

Symbol of paint type

 SE – spray epoxy – standard; SPU – spray polyurethane (on SE layer); C – creodur

Symbol of paint colour

sh = RAL 9006 shine – standard; **yc** = RAL 1007 yellow chromic; **ys** = RAL 1003 yellow signalling; **bs** = RAL 5005 blue signalling;

sb = RAL 5015 sky-blue; **sg** = RAL 7032 silicon-grey; **gr** = RAL 7035 grey; **ag** = RAL 9002 ashen grey-white; **gs** = RAL 9007 grey-silver;

cw = RAL 9010 cream-white; **al** = alu natural colour (for C paint type only)

Standard products:

XD-ID80-4-D₃-D₂-D₁-SEsh

Sample:

XD-ID80-4-M2-M2-M24-SEsh

XD-ID80-4-M2-M2-M2/PD/M36-SEsh

XD-ID80win-4-N3/PD-N3-N3-SEsh

PROTECTION DEGREE

IP	D ₃ , D ₂ , D ₁
54	threaded connection without additional sealing
68	threaded connection with additional sealing